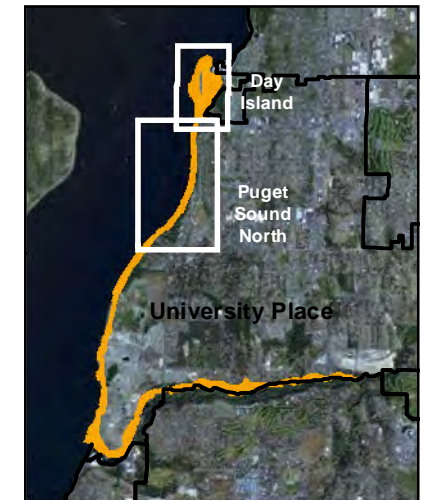


**SHORELINE MASTER PROGRAM UPDATE:
CITY OF UNIVERSITY PLACE**

**Shoreline Environment Designations (SED)
Puget Sound North & Day Island**



Legend

- Shoreline Environment Designation
 - Day Island Medium Intensity
 - Natural
 - Shoreline Residential
 - Urban Conservancy
- Marine Deep Water
(Extends from -10 ft MLLW to Middle of Waterway)
- OHWM (DNR)
- OHWM (Adjusted Based on Ecology Site Visit July 25, 2012)
- 10ft MLLW (Approx)
- City Limits
- Unincorporated Pierce County
- Parcels
- Shoreline Planning Area
- Streams
- Waterbodies
- Railroads
- Major Roads



SOURCE: ESA Adolfson, 2009, 2011; Pierce County, 2007; WDNR, 2000, 2003, 2006, 2007; WA Dept. of Ecology, 2002, 2012; NAIP (USDA), i-cubed, 2009 (Aerial)

Figure 4-1



SMA Grant No. G1000034

