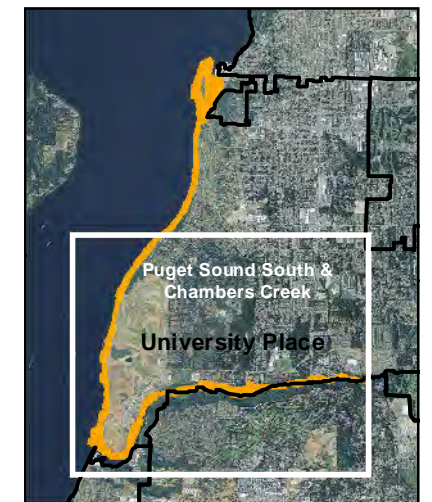


**SHORELINE MASTER PROGRAM UPDATE:
CITY OF UNIVERSITY PLACE**

**Shoreline Environment Designations (SED)
Puget Sound South & Chambers Creek**



Legend

Shoreline Environment Designation

- Day Island Medium Intensity
- Natural
- Shoreline Residential
- Urban Conservancy

Marine Deep Water
(Extends from -10 ft MLLW to Middle of Waterway)

- OHWM (DNR)
- 10ft MLLW (Approx)
- City Limits
- Unincorporated Pierce County
- Parcels
- Shoreline Planning Area
- Streams
- Waterbodies
- Railroads
- Major Roads

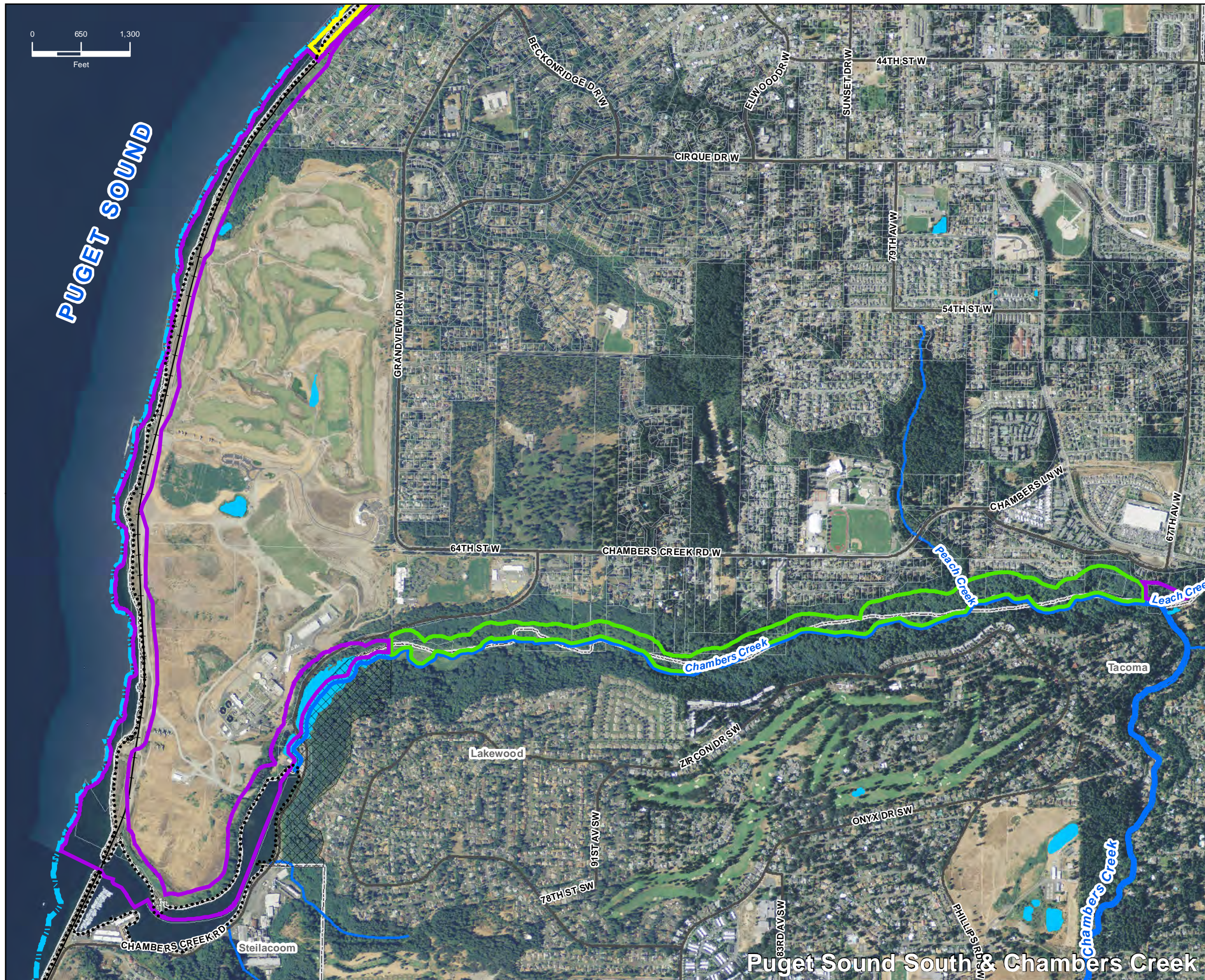


SOURCE: ESA Adolfson, 2009, 2011; Pierce County, 2007; WDNR, 2000, 2003, 2006, 2007; WA Dept. of Ecology, 2002; NAIP (USDA), 2009 (Aerial)

Figure 4-2



SMA Grant No. G1000034



Puget Sound South & Chambers Creek