

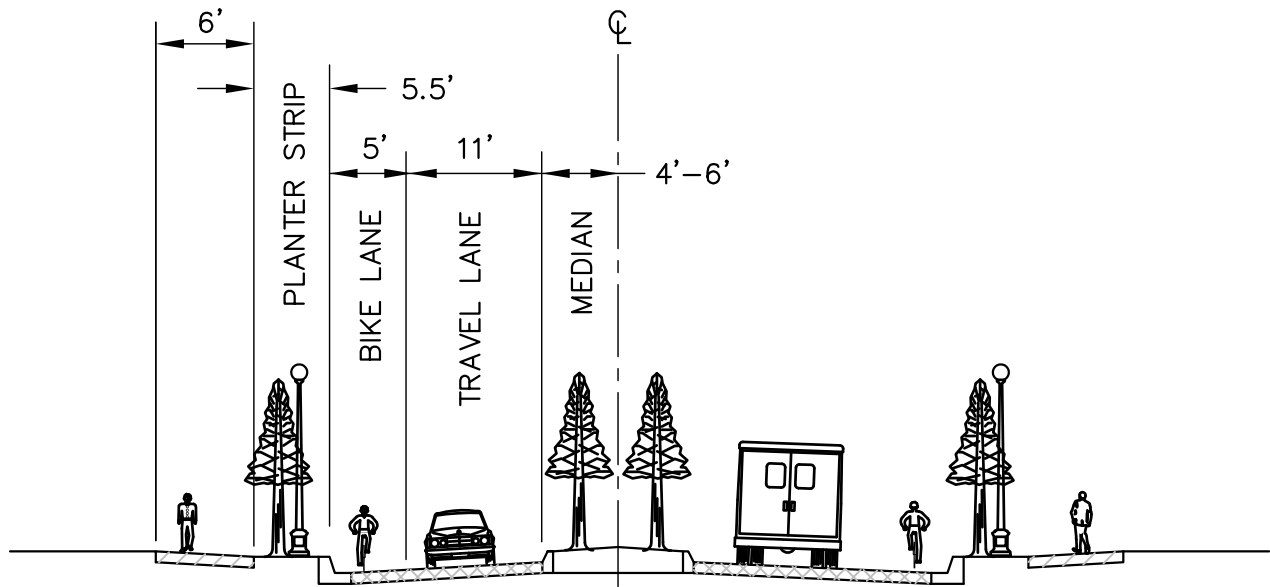
ROADWAY SECTION
5 LANE ARTERIAL
 N.T.S.

NOTES:

1. ON-STREET MAY BE PARKING PERMITTED SUBJECT TO THE DIRECTOR'S APPROVAL.
2. SEE UPMC 13.20 TABLE II
3. THIS ROADWAY SECTION APPLIES TO BOTH MAJOR AND SECONDARY ARTERIALS.

CITY OF UNIVERSITY PLACE ENGINEERING DIVISION			
ROADWAY SECTION 5 LANE ARTERIAL			
APPROVED BY CITY ENGINEER _____		DATE _____	
DWN TC	CKD JOE	DATE 6/2/04	FILE FIG04-01

REV



ROADWAY SECTION
3 LANE ARTERIAL

N.T.S.

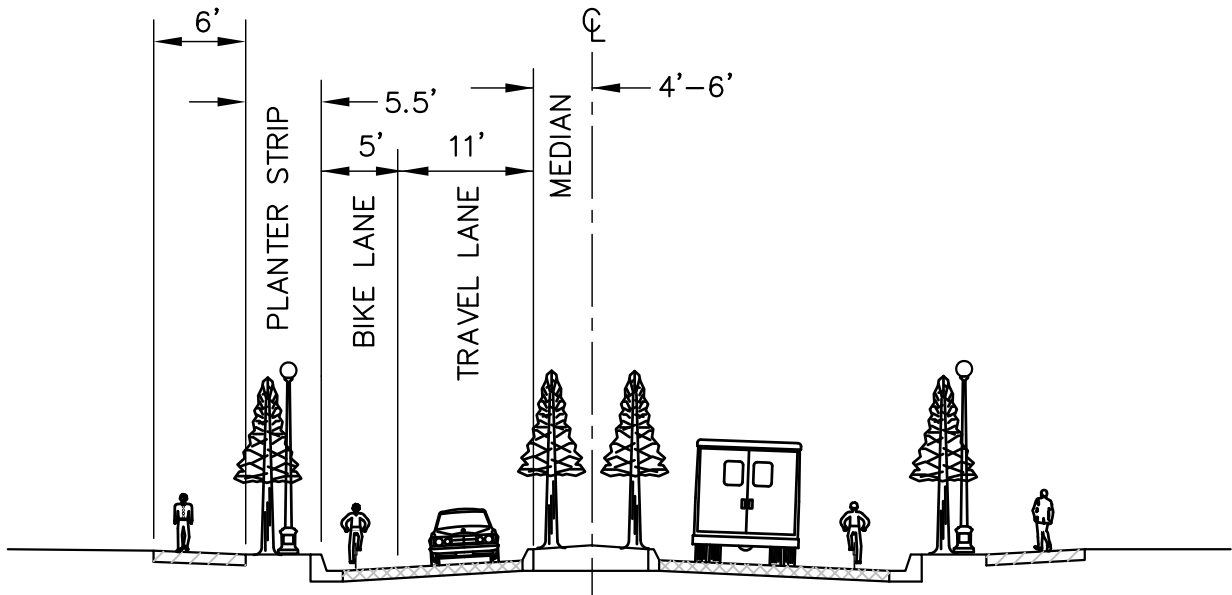
NOTES:

1. ON-STREET PARKING MAY BE PERMITTED SUBJECT TO THE DIRECTORS APPROVAL.
2. SEE UPMC 13.20 TABLE II
3. THIS ROADWAY SECTION APPLIES TO BOTH MAJOR AND SECONDARY ARTERIALS.

CITY OF UNIVERSITY PLACE ENGINEERING DIVISION			
ROADWAY SECTION 3 LANE ARTERIAL			
APPROVED BY CITY ENGINEER _____		DATE _____	
DWN TC	CKD JOE	DATE 6/2/04	FILE FIG04-02

REV

REV. NO. 0



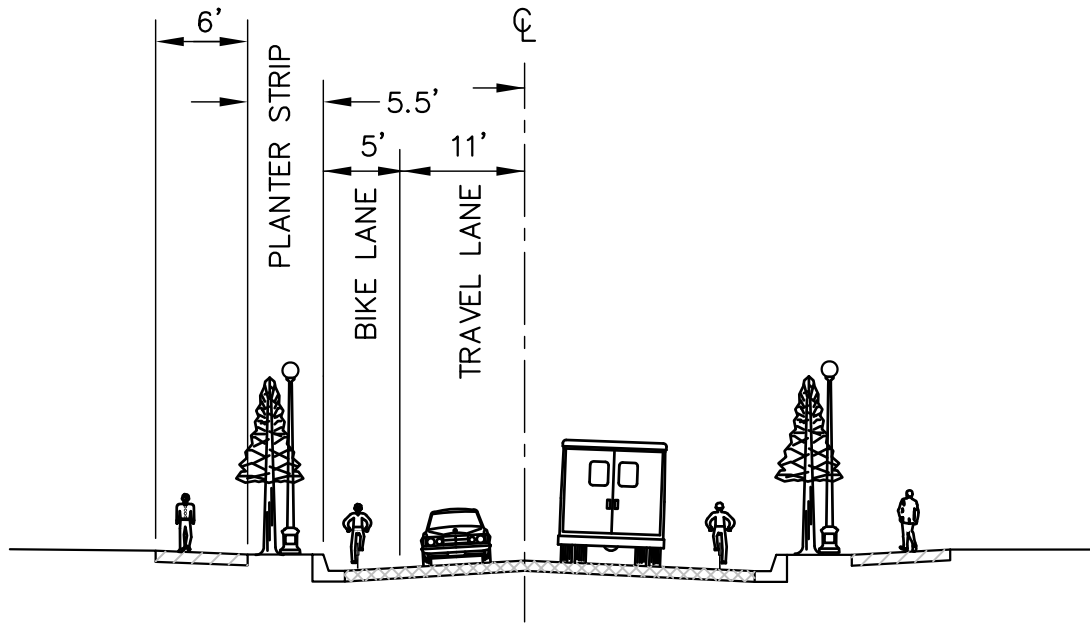
ROADWAY SECTION
COLLECTOR ARTERIAL
N.T.S.

NOTES:

1. ON-STREET PARKING MAY BE PERMITTED SUBJECT TO THE DIRECTOR'S APPROVAL.
2. SEE UPMC 13.20 TABLE II

CITY OF UNIVERSITY PLACE ENGINEERING DIVISION			
ROADWAY SECTION COLLECTOR ARTERIAL			
APPROVED BY CITY ENGINEER _____		DATE _____	
DWN TC	CKD JOE	DATE 6/2/04	FILE FIG04-03

REV



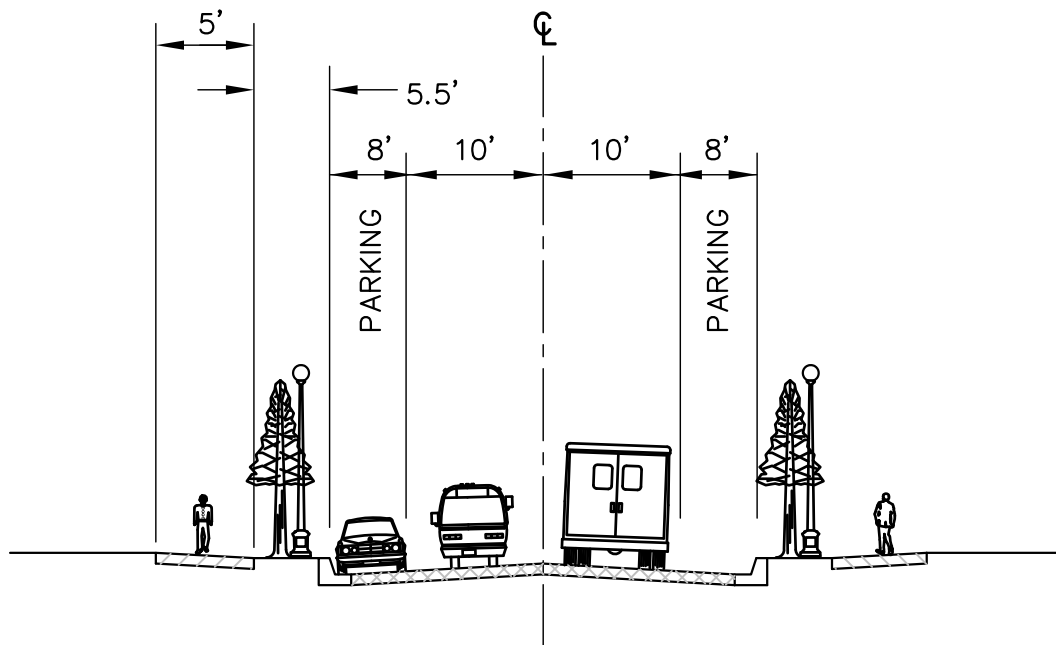
ROADWAY SECTION
NEIGHBORHOOD COLLECTOR ARTERIAL
 N.T.S.

NOTES:

1. ON-STREET PARKING MAY BE PERMITTED SUBJECT TO DIRECTOR'S APPROVAL.
2. SEE UPMC 13.20 TABLE II

CITY OF UNIVERSITY PLACE ENGINEERING DIVISION			
ROADWAY SECTION NEIGHBORHOOD COLLECTOR ARTERIAL			
APPROVED BY CITY ENGINEER _____		DATE _____	
DWN TC	CKD JOE	DATE 6/2/04	FILE FIG04-04

REV



ROADWAY SECTION
LOCAL STREET FEEDER
 N.T.S.

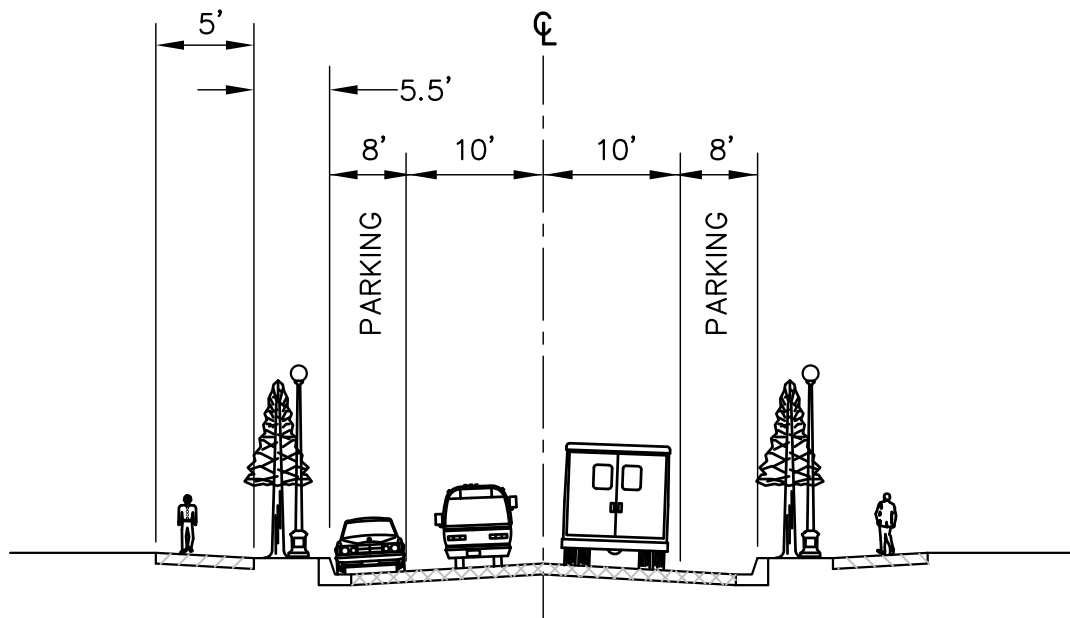
NOTES:

1. SEE UPMC 13.20 TABLE II

CITY OF UNIVERSITY PLACE ENGINEERING DIVISION			
ROADWAY SECTION LOCAL STREET FEEDER			
APPROVED BY CITY ENGINEER _____		DATE _____	
DWN TC	CKD JOE	DATE 6/2/04	FILE FIG04-05

REV

REV. NO. 0



ROADWAY SECTION
LOCAL STREET MINOR
 N.T.S.

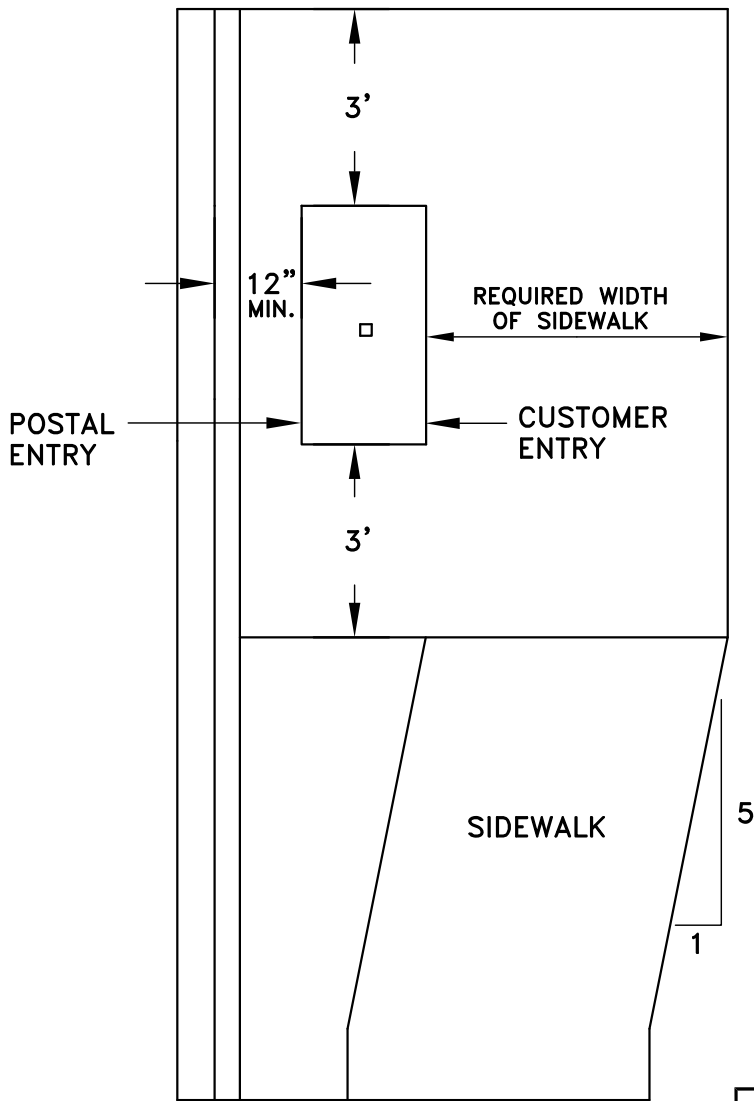
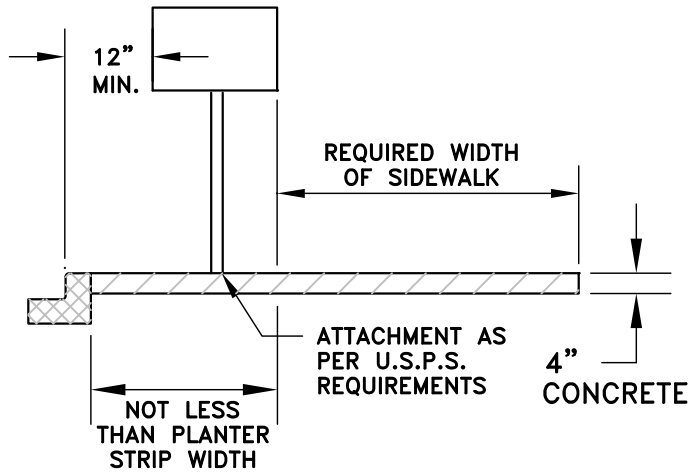
NOTES:

1. SEE UPMC 13.20 TABLE II

CITY OF UNIVERSITY PLACE ENGINEERING DIVISION			
ROADWAY SECTION LOCAL STREET MINOR			
APPROVED BY CITY ENGINEER _____		DATE _____	
DWN TC	CKD JOE	DATE 6/2/04	FILE FIG04-06

REV

REV. NO. 0



MAIL BOX LAYOUT
NTS

GENERAL NOTES:

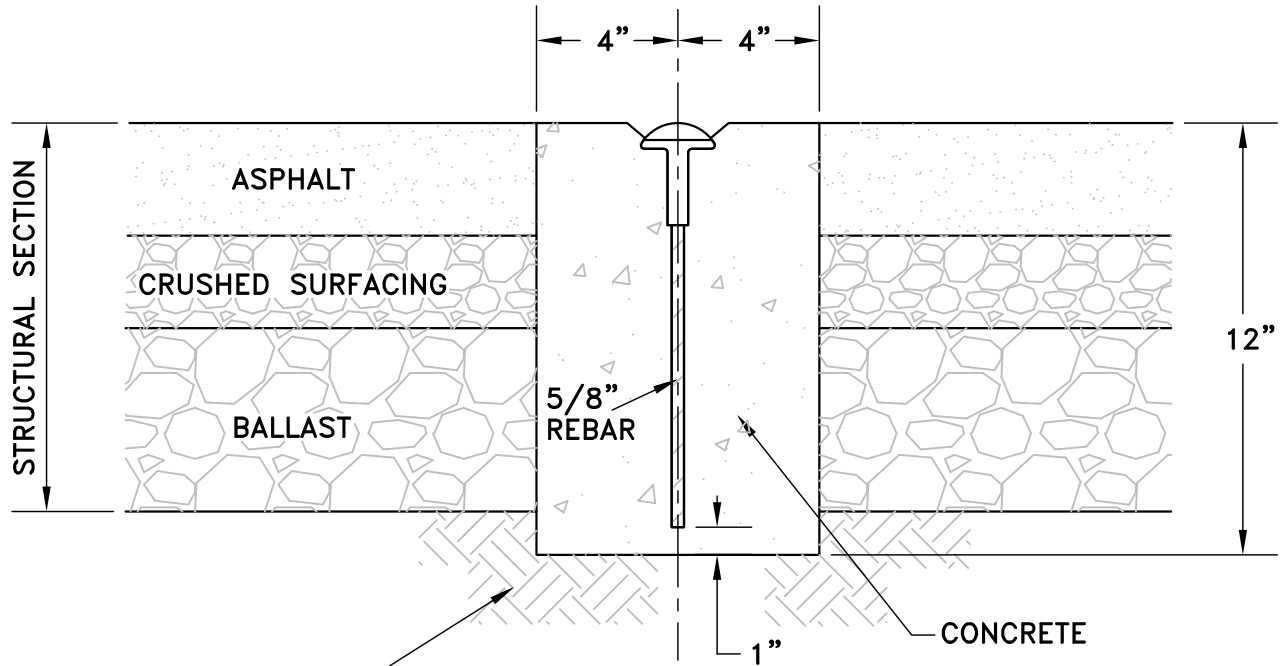
1. SEE DEVELOPMENT GUIDELINE UPMC 13.20 ARTICLE B FOR ADDITIONAL REQUIREMENTS.
2. THE CLEARANCE WIDTHS ARE MEASURED FROM THE OUTERMOST EDGE OF THE MAIL STRUCTURE.

CITY OF UNIVERSITY PLACE
ENGINEERING DIVISION

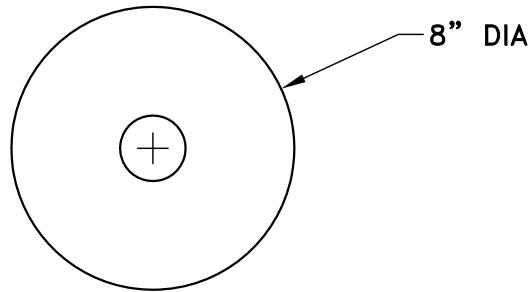
MAIL BOX LAYOUT

APPROVED BY _____ DATE _____
CITY ENGINEER

REV	DWN	TC	CKD	JOE	DATE	6/2/04	FILE	FIG04-16
-----	-----	----	-----	-----	------	--------	------	----------



UNDISTURBED
SOIL



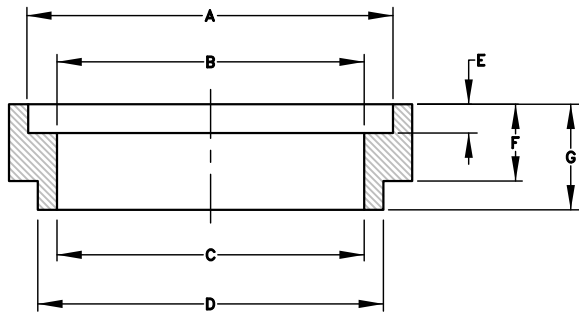
**CAST IN PLACE
MONUMENT**
NTS

GENERAL NOTES:

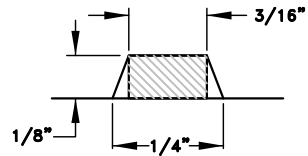
1. THIS MOUNUMENT TO BE USED PRIMARILY ON BITUMINOUS OR ASPHALT CONCRETE PAVEMENT FOR USE PRIMARILY IN SUBDIVISIONS AND MINOR ARTERIALS.
2. CONCRETE BASE DIMENSIONS SHOWN ARE MINIMUM.
3. CAP SHALL BE "BERNTSEN RB SERIES" OR BRASS PLUG MARKER.
4. CONCRETE TO BE PLACED ON A FIRM AND UNYIELDING FOUNDATION.
5. ASPHALT SHALL BE CORE DRILLED FOR THE INSTALLATION OF MONUMENT.
5. MINIMUM ULTIMATE COMPRESSION STRENGTH OF CONCRETE AT 28 DAYS SHALL BE 3000 PSI

CITY OF UNIVERSITY PLACE ENGINEERING DIVISION			
CAST IN PLACE MONUMENT			
APPROVED BY CITY ENGINEER _____		DATE _____	
DWN TC	CKD JOE	DATE 6/2/04	FILE FIG04-19

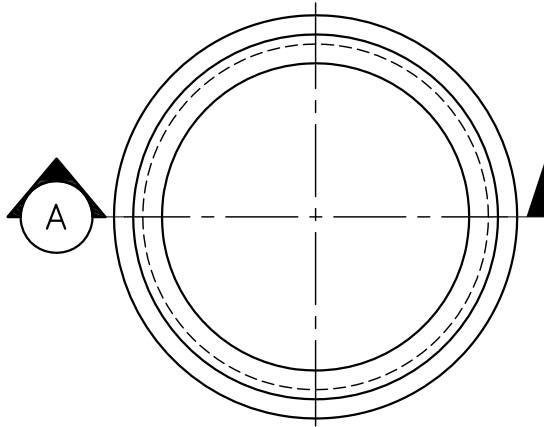
REV



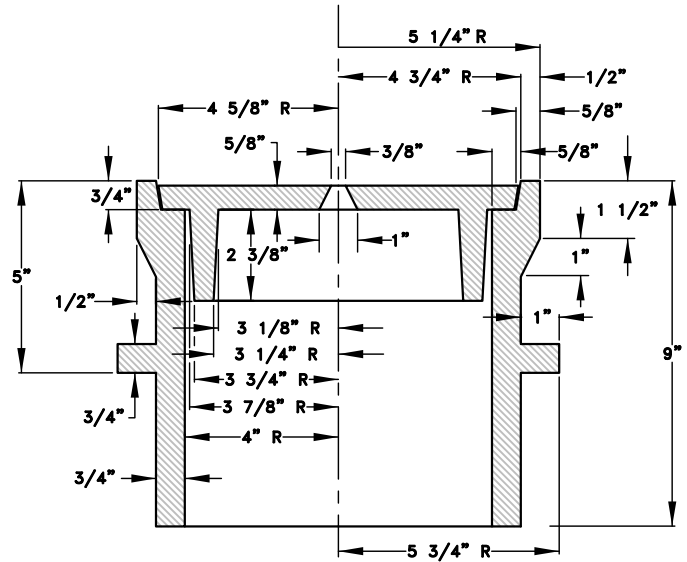
SECTION (A)



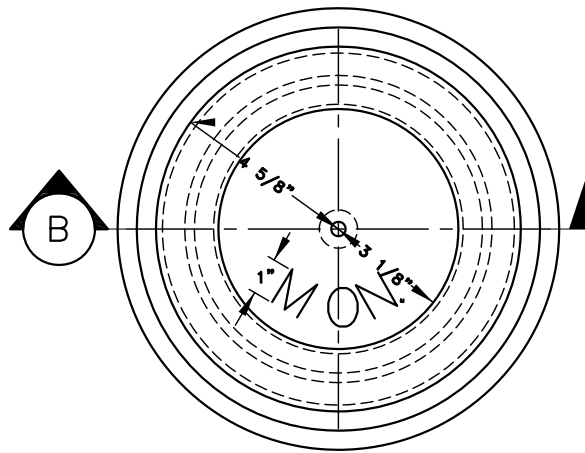
SECTION OF LETTER



RISER RING
NTS



SECTION (B)



CASE AND COVER
NTS

SIZE			
DIM	1-1/2"	2"	3"
A	10-1/2"	10-1/2"	10-1/2"
B	9-1/2"	9-1/2"	9-1/2"
C	8"	8"	8"
D	9"	9"	9"
E	3/4"	3/4"	3/4"
F	1-1/2"	2"	3"
G	2-1/4"	2-3/4"	3-3/4"

NOTES:

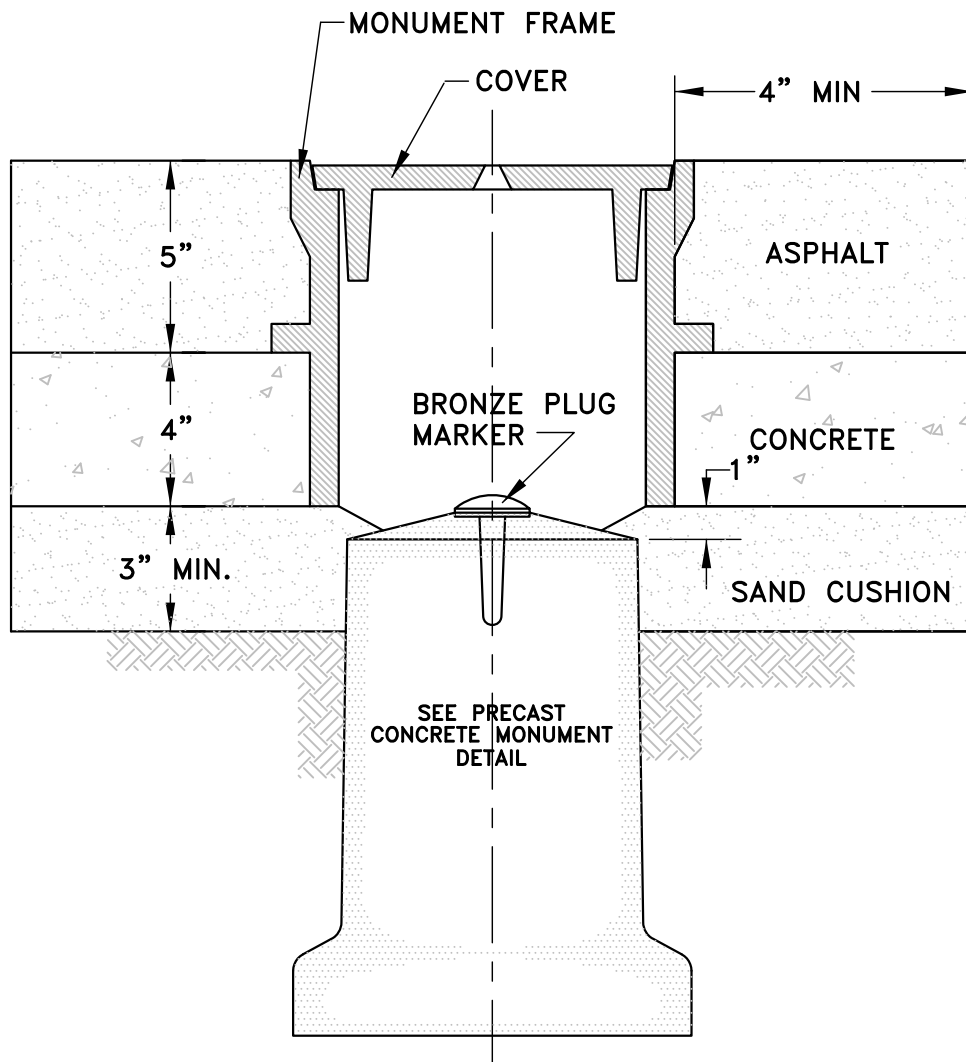
THE CASTINGS SHALL BE GRAY-IRON CASTINGS, ASTM DESIGNATION A 48, CLASS 40. THE COVER AND SEAT SHALL BE MACHINED SO AS TO HAVE PERFECT CONTACT AROUND THE ENTIRE CIRCUMFERENCE AND FULL WIDTH OF BEARING SURFACE.

WHEN THE MONUMENT CASE AND COVER ARE PLACED IN CEMENT CONCRETE PAVEMENT THE CONCRETE BASE WILL BE NECESSARY.

APPROXIMATE WEIGHTS:
CASE 60 LBS.
COVER 19 LBS.
TOTAL 79 LBS.

CITY OF UNIVERSITY PLACE ENGINEERING DIVISION			
MONUMENT CASE AND COVER WITH RISER			
APPROVED BY CITY ENGINEER _____		DATE _____	
DWN TC	CKD JOE	DATE 6/2/04	FILE FIG04-20

REV



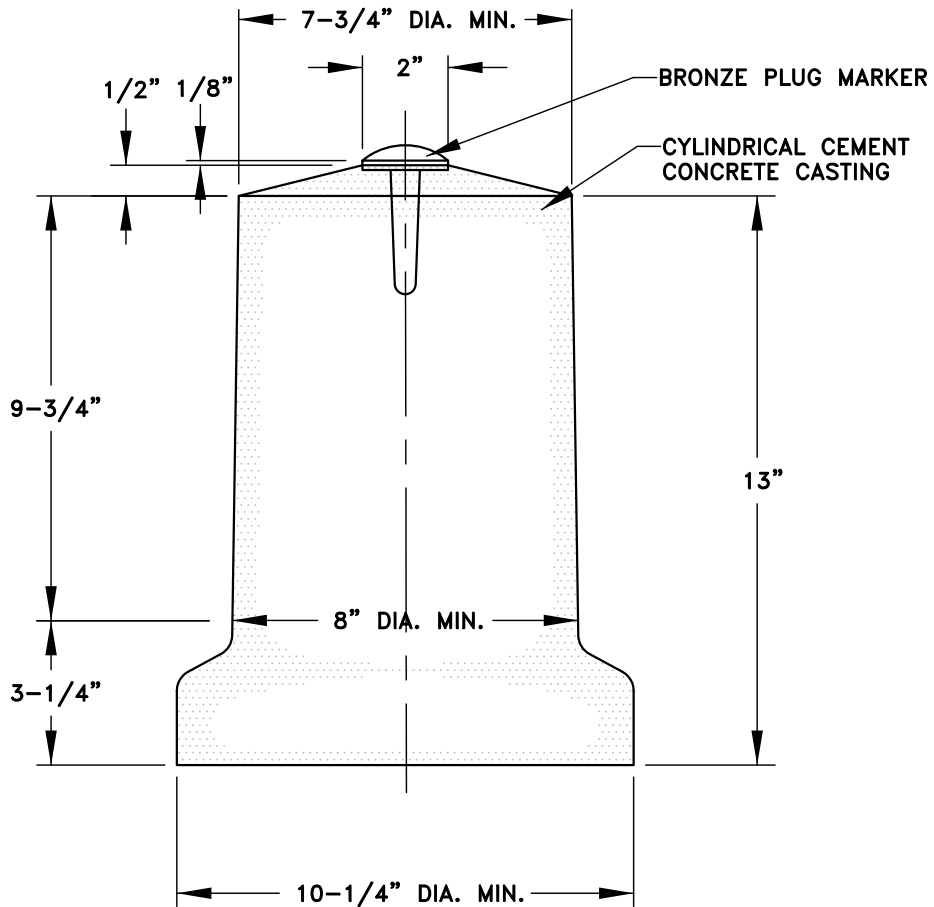
**MONUMENT CASE
AND COVER**
NTS

NOTE:
FOR USE PRIMARILY ON
ARTERIAL STREETS, STREETS
WITH BUS TRAFFIC AND
TRUCK ROUTES.

CITY OF UNIVERSITY PLACE ENGINEERING DIVISION			
MONUMENT CASE AND COVER			
APPROVED BY CITY ENGINEER _____		DATE _____	
DWN	CKD	DATE	FILE
TC	JOE	6/2/04	FIG04-21

REV

REV. NO. 1



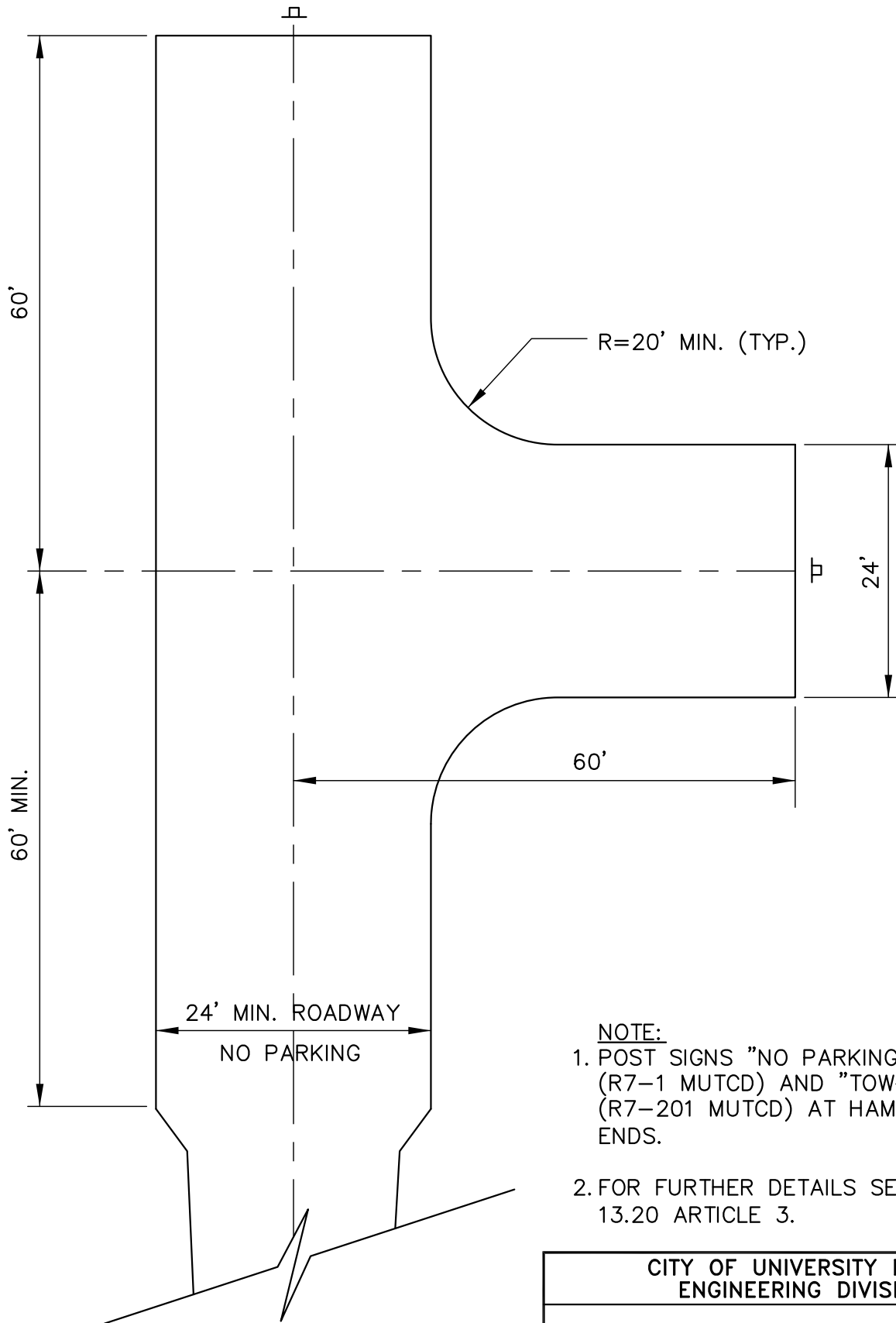
**PRECAST CONCRETE
MONUMENT**
NTS

GENERAL NOTES:

MINIMUM ULTIMATE COMPRESSIVE
STRENGTH OF CONCRETE CASTING
AT 28 DAYS - 3000 PSI.

CITY OF UNIVERSITY PLACE ENGINEERING DIVISION			
PRECAST CONCRETE MONUMENT			
APPROVED BY CITY ENGINEER _____		DATE _____	
DWN TC	CKD JOE	DATE 6/2/04	FILE FIG04-22

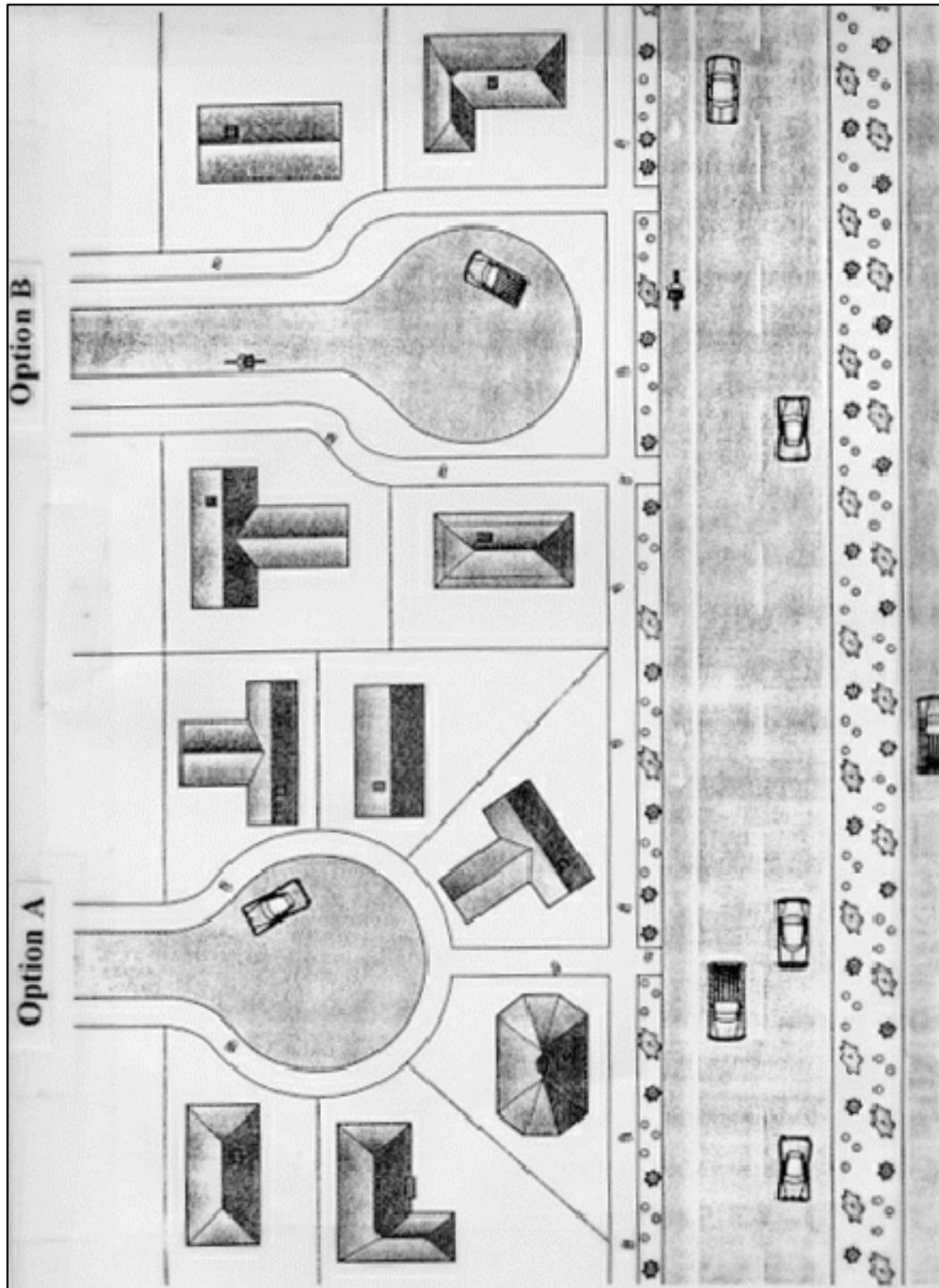
REV



- NOTE:**
1. POST SIGNS "NO PARKING FIRE LANE" (R7-1 MUTCD) AND "TOW-AWAY ZONE" (R7-201 MUTCD) AT HAMMERHEAD ENDS.
 2. FOR FURTHER DETAILS SEE UPMC 13.20 ARTICLE 3.

CITY OF UNIVERSITY PLACE ENGINEERING DIVISION			
DEAD END HAMMERHEAD			
APPROVED BY CITY ENGINEER _____		DATE _____	
DWN TC	CKD JOE	DATE 6/2/04	FILE FIG04-24

REV



NTS

CITY OF UNIVERSITY PLACE
ENGINEERING DIVISION

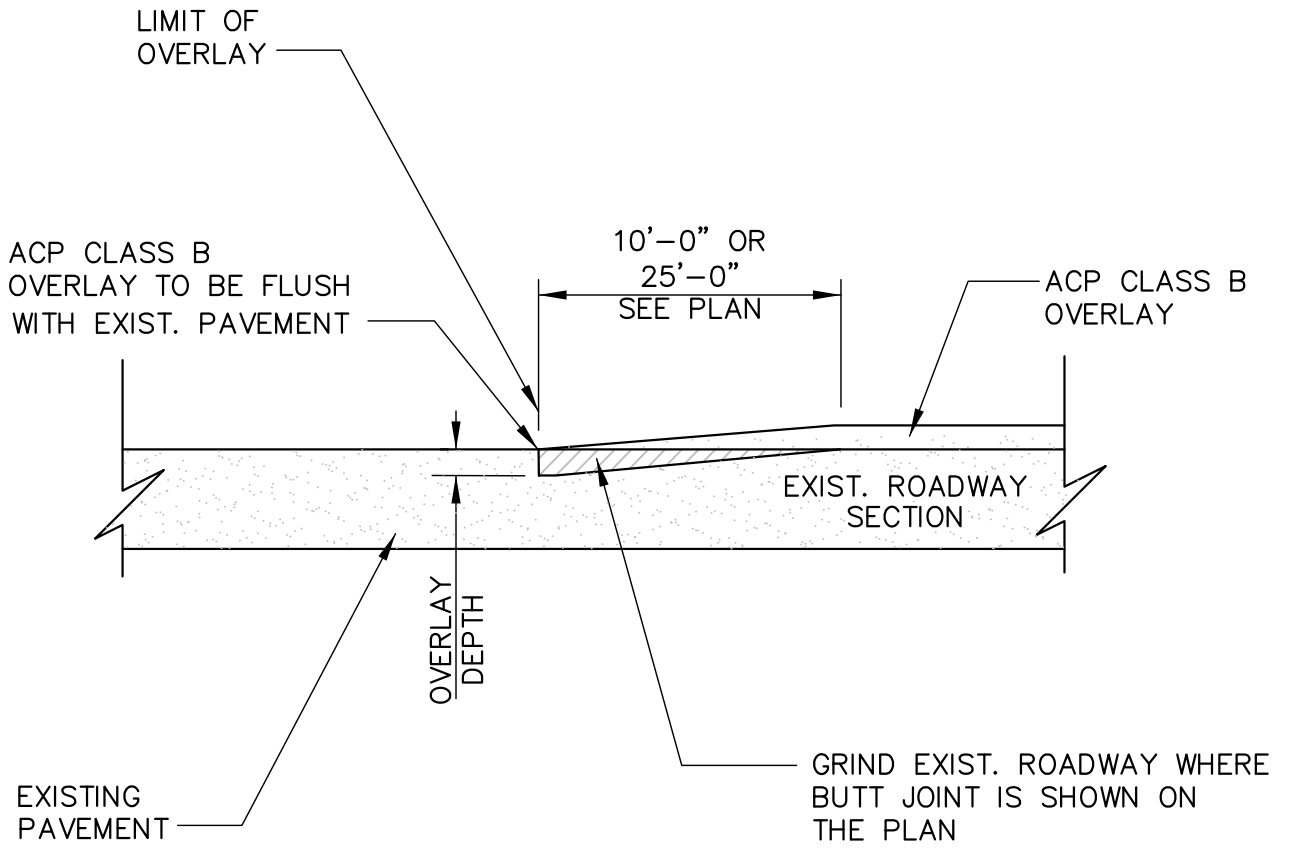
PEDESTRIAN PATH CONNECTION BETWEEN
THROUGH STREET AND CUL-DE-SAC

APPROVED BY
CITY ENGINEER _____ DATE _____

REV

DWN	CKD	DATE	FILE
TC	JOE	6/2/04	FIG04-26

REV. NO. 0



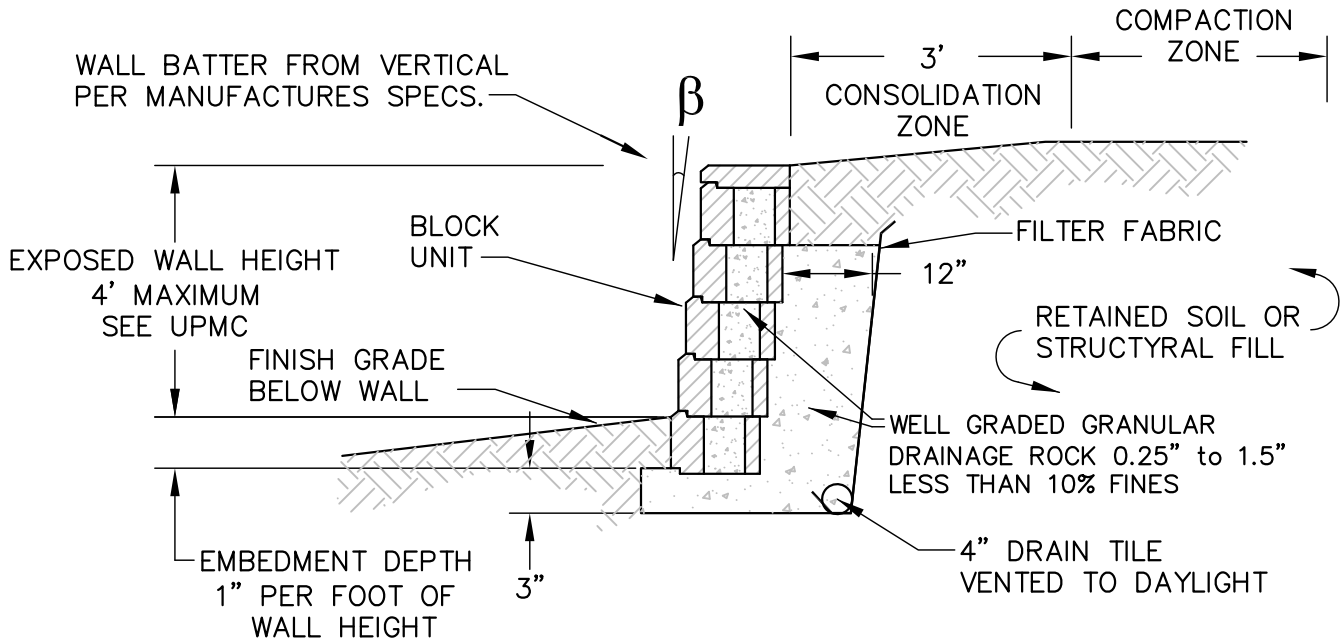
BUTT JOINT
NTS

NOTES:

1. EMULSIFIED ASPHALT GRADE CSS-1. TACK SHALL BE APPLIED TO EDGES OF EXISTING PAVEMENT. ALL JOINTS SHALL BE SEALED USING PAVING ASPHALT AR4000W OR EQUIVALENT.

CITY OF UNIVERSITY PLACE ENGINEERING DIVISION			
BUTT JOINT DETAIL			
APPROVED BY CITY ENGINEER _____		DATE _____	
DWN TC	CKD JOE	DATE 6/2/04	FILE FIG04-27

REV



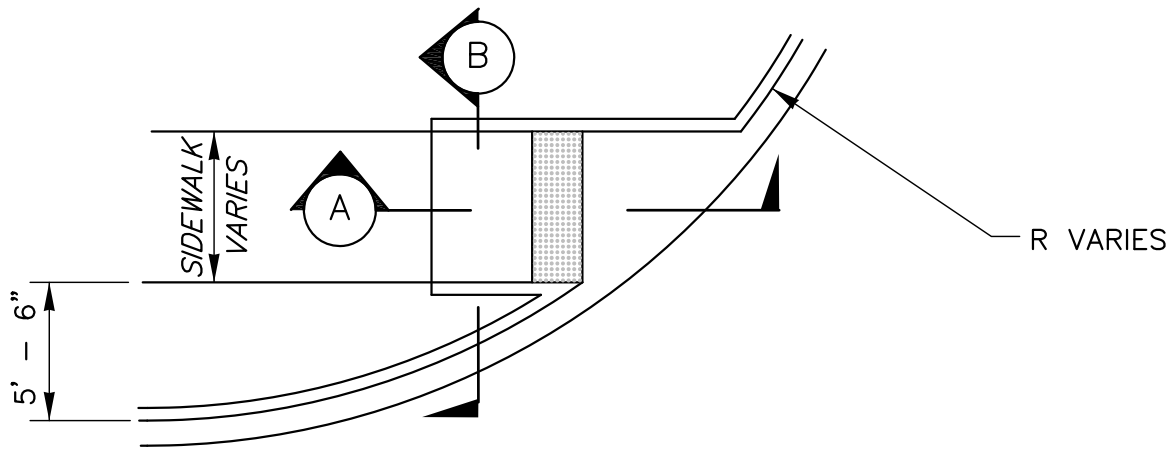
MODULAR BLOCK WALL
NTS

NOTES:

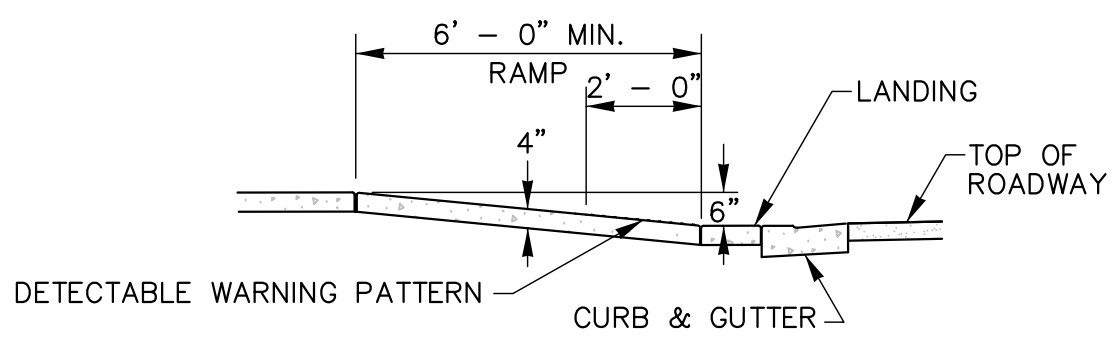
1. WALLS IN EXCESS OF 4' IN HEIGHT MUST BE DESIGNED BY AN ENGINEER.
2. COLOR OF BLOCKS SHALL BE SANDSTONE OR EQUIVALENT.
3. 75 LB. ALLAN BLOCK OR EQUIVALENT.

CITY OF UNIVERSITY PLACE ENGINEERING DIVISION			
MODULAR BLOCK WALL DETAIL			
APPROVED BY CITY ENGINEER _____		DATE _____	
DWN TC	CKD JOE	DATE 9/21/04	FILE FIG04-28

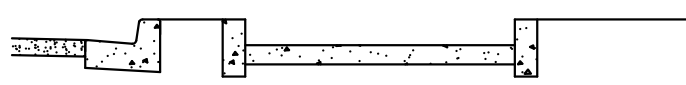
REV



ACCESSIBILITY RAMP TYPE A
NTS



SECTION A
NTS



SECTION B
NTS

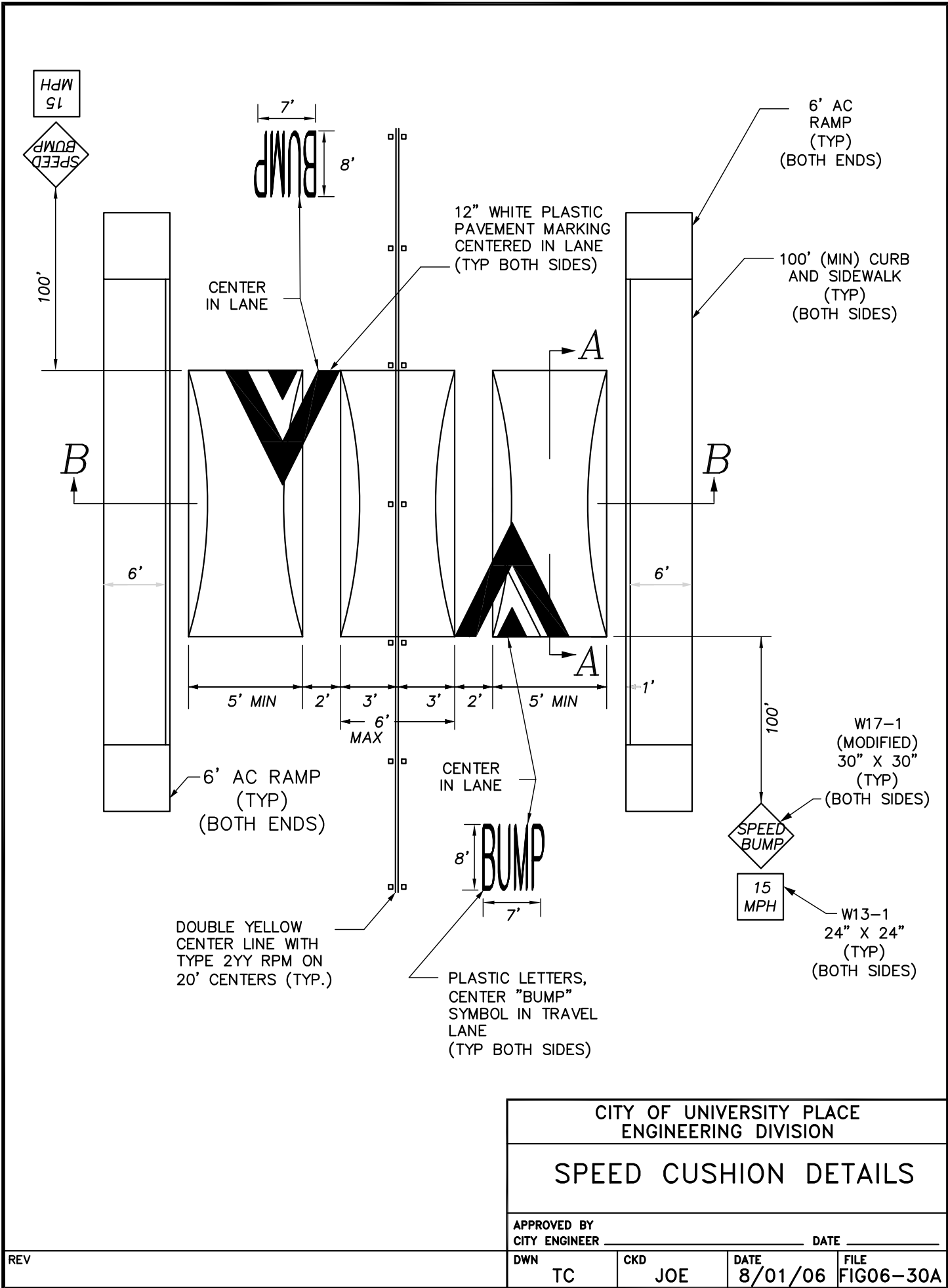
NOTE:

SEE SIDEWALK SPACING,
EXPANSION JOINTS & SCORE
MARK DETAIL FOR ADDITIONAL
NOTES.

LOCATE HANDICAP RAMP @ 1/4 &
3/4 DELTA

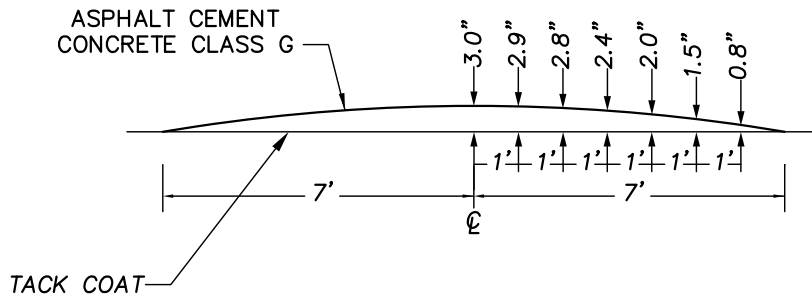
CITY OF UNIVERSITY PLACE ENGINEERING DIVISION			
ACCESSIBILITY RAMP TYPE A			
APPROVED BY CITY ENGINEER _____		DATE _____	
DWN TC	CKD JOE	DATE 6/2/04	FILE FIG04-29

REV

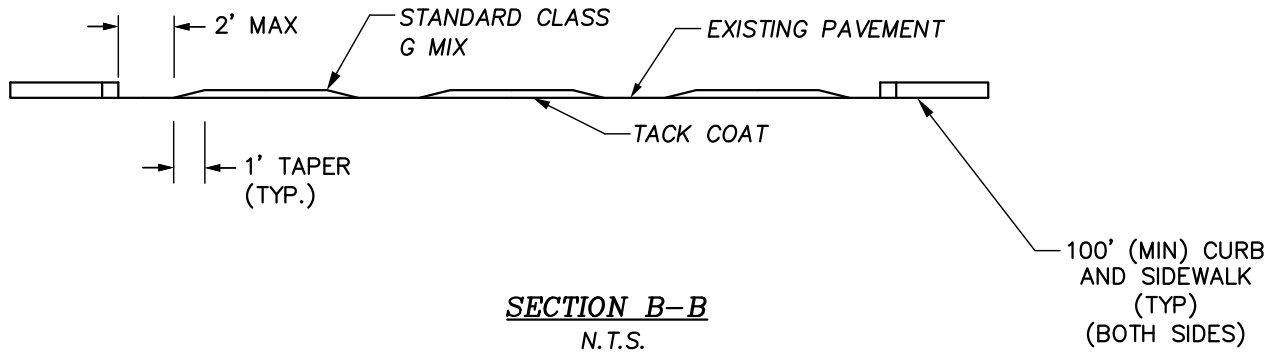


CITY OF UNIVERSITY PLACE ENGINEERING DIVISION			
SPEED CUSHION DETAILS			
APPROVED BY CITY ENGINEER _____		DATE _____	
DWN	TC	CKD	JOE
DATE 8/01/06		FILE FIG06-30A	

REV

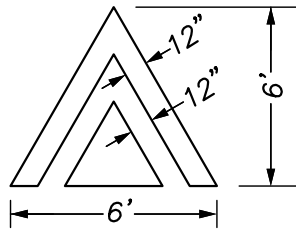


SECTION A-A
PARABOLIC CROWN
 N.T.S.



SECTION B-B
 N.T.S.

12" PLASTIC PAVEMENT MARKING DETAIL



CITY OF UNIVERSITY PLACE ENGINEERING DIVISION			
SPEED CUSHION DETAILS			
APPROVED BY CITY ENGINEER _____		DATE _____	
DWN TC	CKD JOE	DATE 8/01/06	FILE FIG06-30B

REV